



**INKULU**  
**PLASTIC PIPES** PTY LTD

DARE TO COMMIT

# Company Profile

AIMS TO PERFORM EXCEEDINGLY  
**BETTER THAN EXPECTED**

# Introduction



## Welcome to Inkulu Plastics

Inkulu Plastics began in September 2014, manufacturing in high quality HDPE pipes, ranging from 16mm to 630mm and pressures PN4 up to PN25. Our vision back then was ultimately to produce 1200mm pipes. We are proud to unveil that as of December 2019, Inkulu Plastics has achieved a South African first by successfully commissioning our 1200mm pipe extrusion line. Inkulu Plastics has now the ability to produce the bigger sizes 710 up to 1200mm diameter pipes.

Our current manufacturing pipe range is now from 16 mm to 1200 mm. SANS - ISO4427/ISO4437 with well over 1500- ton capacity per month. We perfectly manufactured high pressure pipes up to SDR5 achieving 45bar, based on special production requirements by our customers. Inkulu Plastics now offers coil ranging from 16 to 40mm in 500m coils. Please don't hesitate to contact us for further details.

The company has expanded its production facilities by investing in a modern pipe granulator that enables us to have total control of all first generation HDPE material produced in-house, thus we can successfully state only VIRGIN HDPE pipe grade material passes through all our extruders

Initially the business focused on manufacturing High Density polyethylene (HDPE) pipe, but over the years it has become clear that there is a definite demand for Polypropylene plumbing hot water pipes as well as telecommunication optic fibre HDPE ducting. Inkulu Plastics can proudly announce the production of these products.

We are also suppliers and manufactures of HDPE fabricated fittings as well as molded HDPE butt welding and electrofusion fittings.

## What we Stand for

Inkulu Plastics motto of "DARE TO COMMIT" encompasses the way an organisation accepts all challenges and aims to perform exceedingly better than expected, to climb to greater heights and at the same time not forgetting ground realities.



Member, Gabriel Reddy

REG NO. 2014/182090/07

VAT NO. 4530267311

B-BBEE LEVEL 2

[www.inkuluplastics.co.za](http://www.inkuluplastics.co.za)

[sales@inkuluplastics.co.za](mailto:sales@inkuluplastics.co.za)

# About Us



Founded in 2014 INKULU PLASTIC PIPES set out to be the leading HDPE pipe manufacturing firm. The company is a member of the South African Plastic Pipe Manufacturing Association (SAPPMA). The company was established by Gabriel Reddy, with well over 30 years' experience in the HDPE Piping industry. Since start up in 2014 Inkulu plastics has a well proven record for supplying quality pipes on time, and we are focused on establishing and building partnerships with our customers, delivering on time, reliability and Quality.

Inkulu Plastics has become the leading supplier of small, medium and large bore HDPE Pipes in South Africa, Botswana, Zambia and DRC. We have expanded rapidly because of our policy of using only the best VIRGIN raw material available and focusing on producing high quality products. We are able to print names/logos for companies on promotional piping projects and this is a great way to brand the product for your company.

We can now also transport 24m length straight pipe.



## Our Values

**Quality** - We are certified member of IFFPA and SAPPMA and Certifications in ISO 9001:2015 and SANS /ISO 4427-2. As well as SABS, SABI, Health & Safety ISO 4500/1-218, Environmental Certificate ISO 14001 and BEE Level 2.

**Prompt Delivery** - Inkulu Plastics put customer needs and expectations first, all customer are important, big or small.

**Support** - We provide our customers with professional services and advise.

**Experience** - All our staff are highly trained and have collectively 134 years experience.

## Mission

- Provide high-quality, affordable piping/fittings solutions
- Create and cultivate long-term relationships with clients
- Respond immediately to changing needs of our clients
- Achieve complete customer satisfaction

## Vision

Our vision is to generate consistent and sustainable service/quality. To achieve this objective, we continue to practice the values that stand at the core of our professional philosophy.



Member, Gabriel Reddy

REG NO. 2014/182090/07

VAT NO. 4530267311

B-BBEE LEVEL 2

[www.inkuluplastics.co.za](http://www.inkuluplastics.co.za)

[sales@inkuluplastics.co.za](mailto:sales@inkuluplastics.co.za)

# Our Laboratory



## 1. MELT FLOW INDEXER (MFI) TEST

Determines the melt strength of raw material to be used to manufacture pipe. MFI indirectly measures the viscosity of the material. Ref ISO 1133.

- \* The test is done upon receiving of raw material sent with the COA, first to verify if the supplier's test corresponds with the test result on the COA sent. SANS 4427-1
- \* Once again when pipe is manufactured, it goes for MFI tests to measure the value on the pipe relative to the value on the measured compound.



Once the pipe is manufactured, it should have the mechanical and physical characteristics conforming to the requirements of SANS 4427-2.



## 2. LONGITUDINAL REVERSION

Determines the expansion and contraction due to temperature changes. This will depend on the start and final temperature.

- \* A pipe of specified length is subjected to specified constant temperature within an oven or a liquid bath for a specific time. Ref SANS 2505.
- \* This reversion is calculated as a percentage of the change in length to the initial length.

## 3. OXIDATION INDUCTION TIME (OIT)

OIT is a sensitive measure of the level of anti-oxidative additives within the polymer  
Determines of oxidation induction time and oxidation induction temperature of polymeric materials by means of Differential Scanning Calorimetry (DSC) Ref ISO 11357.

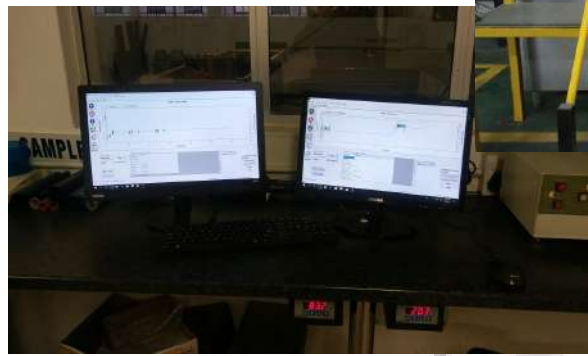


# Our Laboratory



## 4. TENSILE PROPERTIES

Determine the modulus of elasticity, elastic limit, elongation, proportional limit, reduction in area, tensile strength, yield point and yield strength.



## 5. HYDROSTATIC PRESSURE TESTS

The resistance to internal pressure testing is the most important test of thermoplastic pipes to constant internal water pressure at a constant temperature. The test duration is subject to the tension generated by the internal pressure and the temperature.

We also have Hydrostatic Computerised systems.



## 6. CARBON BLACK DISPERSION

Determine the presence of carbon black dispersion content which is added to the product during the process of production and it is widely used in the laboratories of plastic industries.



# Products



As one of the leading plastic piping manufacturers in South Africa, Inkulu Plastics are proud that our products conform to the highest standards and quality, with pipes and fittings being manufactured in an ISO9001:2008 accredited factory under rigorous process controls to ensure that each product meets strict customer and quality requirements.



Pipe offers come in 3 different materials namely:

- HDPE (High Density Polyethylene) Pipes
- LDPE (Low Density Polyethylene) Pipes
- PP (Polypropylene) Pipes

## HDPE Pipe

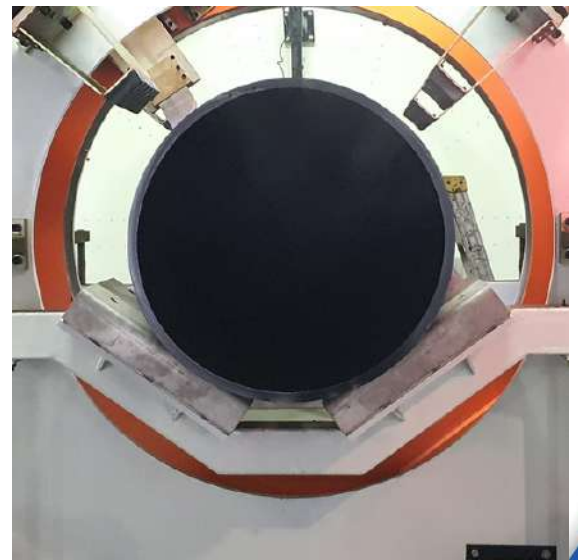
HDPE Pipe is a tough pipe with high resistance to chemicals and abrasion /corrosion / decaying resistant properties. HDPE has become the preferred material for the mining industry in slurry applications as well as for clean drinking water reticulation systems, Infrastructure includes sewage ,waste water ,storm water and Natural gas systems. HDPE supports Agriculture in sprinkler irrigation and subsoil drainage systems and drill pipes.



HDPE Pipe systems are manufactured to, and carry the SABS mark of trusted quality for SANS ISO 4427 and are available in the below:

- Coiled HDPE Pipes 16 to 110mm,
- Lengths HDPE Pipes 125 to 1200mm,
- Perforated HDPE Pipes 63 to 1200mm,

Over the past few years it has become clear that there was a definite demand for Polyethylene plumbing hot water pipes as well as telecommunication optic fibre HDPE Pipes, and Inkulu Plastics can proudly announce the production of these products.



Member, Gabriel Reddy

REG NO. 2014/182090/07

VAT NO. 4530267311

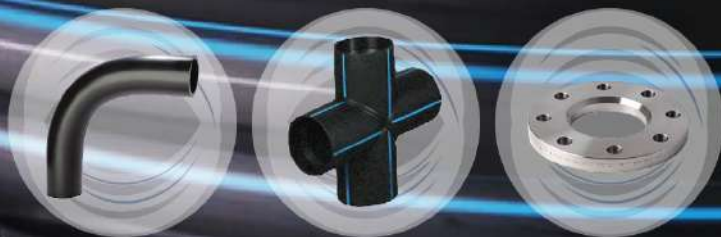
B-BBEE LEVEL 2

# Products



## GAS PIPES

Inkulu Plastic Pipes manufactures GAS PE100 high density polyethylene pipe. The first priority in manufacture in natural gas pipes is ultimate safety. The product is orange as per the international colour code for pipes and fittings in GAS. As Inkulu Plastic Pipes is SANS ISO 9001:2015 accredited, all relevant quality control documentation is recorded and available for inspection. We therefore adhere to the most stringent quality control processes and only use virgin material in the production process.



## FABRICATED FITTINGS

Inkulu Plastics responded to our clients' needs and have invested in fabricated fittings equipment, which will allow for the manufacturing/fabrication of a wide range of bends, tees, stubs & flange, and reducers. Our manufacturing/fabrication range is up to 630mm.

As part of our turnkey HDPE solution we have met the need for more complex and cost efficient pipeline designs by means of HDPE fabricated fittings to solve installation situations where common fittings fail.



Member, Gabriel Reddy

REG NO. 2014/182090/07

VAT NO. 4530267311

B-BBEE LEVEL 2

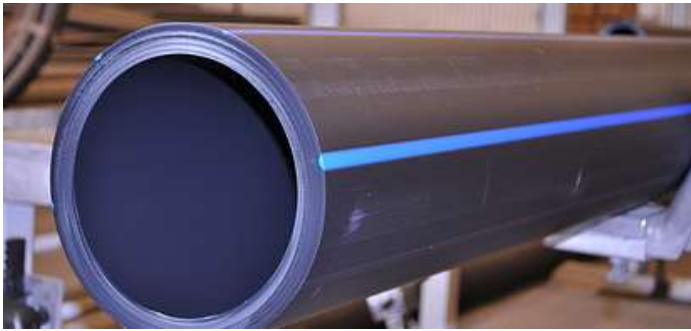
# Products



## JOINING EQUIPMENT



At Inkulu Plastic Pipes we recognise that a pipe system is only as good as its weakest link, the joint. The joining process used in a pipeline construction is critical to the sustainability of the system. Inkulu Plastic Pipes supply cutting edge Welding equipment used for a variety of joining methods.



Member, Gabriel Reddy

REG NO. 2014/182090/07

VAT NO. 4530267311

B-BBEE LEVEL 2

[www.inkuluplastics.co.za](http://www.inkuluplastics.co.za)

[sales@inkuluplastics.co.za](mailto:sales@inkuluplastics.co.za)



## HDPE STRUCTURED WALL PIPE

INKULU PLASTIC PIPES has the capacity to manufacture and supply HDPE Structured Wall Pipe ranging from 300mm to 1500mm and ring stiffness of 4kN/m<sup>2</sup> and 8kN/m<sup>2</sup>. GABYKULU Structured Wall pipe is highly abrasion resistant, tolerant of ground movement and will not corrode or deteriorate in contact with a wide range of substances. These pipes are also characterised by its natural ability to “flex”, which enables them to adjust to different loading conditions, vibrations, stress and soil movements without causing damage to the pipe.



HDPE Structured Wall Pipe represents the latest advancements in material and manufacturing technology. HDPE Structured Wall Pipe is now the front runner in replacing traditional pipe system materials. HDPE Structured Wall Pipe is a light-weight engineered pipe for various gravity and non-pressure applications in the municipal, industrial, road construction, rehabilitation and marine pipeline applications.



# Contact Us



## Gabriel Reddy

CEO

084 446 6384

[gabriel@inkuluplastics.co.za](mailto:gabriel@inkuluplastics.co.za)

## Shaun Reddy

Durban

064 683 3324

[shaun@inkuluplastics.co.za](mailto:shaun@inkuluplastics.co.za)

## Faize Gafoor

Sales and Marketing Manager

082 574 4180

[faize@inkuluplastics.co.za](mailto:faize@inkuluplastics.co.za)

## Internal Sales Durban Office

Errin Chetty

084 795 2892

0317361055

[errin@inkuluplastics.co.za](mailto:errin@inkuluplastics.co.za)

## Liezl Ferreira

Sales Gauteng

082 909 1622

[liezlfer@mweb.co.za](mailto:liezlfer@mweb.co.za)

## Sahiel Bagwandeem

081 361 3743

031 736 1056

[sahiel@inkuluplastics.co.za](mailto:sahiel@inkuluplastics.co.za)



Member, Gabriel Reddy

REG NO. 2014/182090/07

VAT NO. 4530267311

B-BBEE LEVEL 2

[www.inkuluplastics.co.za](http://www.inkuluplastics.co.za)

[sales@inkuluplastic.co.za](mailto:sales@inkuluplastic.co.za)